



FENGCHI COMPANY PROFILE

风驰机械公司介绍



2020

WWW.FENGCHI.COM


FENGCHI was established in 1994, specializing in manufacturing off-road vehicle wheels, with steel and aluminum wheel manufacturing capabilities. Positioned to customize products and services for well-known international customers, determined to lead the development of low-speed wheels.



FENGCHI

F 风 驰 机 械

Currently, we have two plants located in Zhejiang Province. The Songmen plant mainly produces steel wheels, and Wenling plant mainly produces aluminum wheels. In addition, there are independent brand subsidiaries of ANTEGO in Hangzhou, US and Canada, which are engaged in tire assembly business.



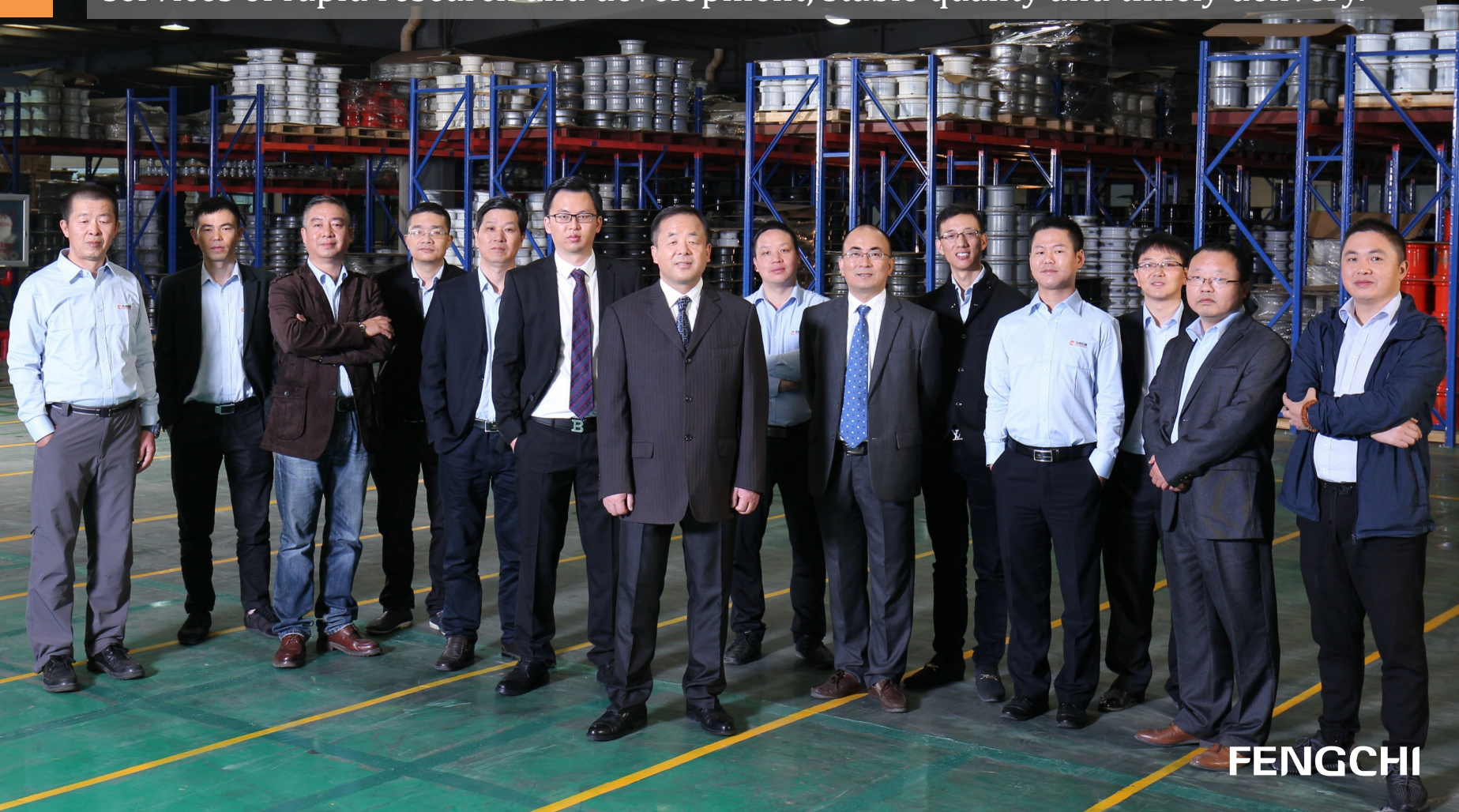
Mr. Pan Weimin, the President of FENGCHI. He is also the head engineer of research and development center. He has invented several professional steel manufacturing equipment with his exquisite mechanical design capability. The technical team with him as the core has the dual research and development capabilities of products and equipment, so that the company has high technical characteristics.



董事长：

潘伟民

Our team is composed of a group of employees who uphold the values of customer first, integrity and responsibility, teamwork, and pragmatic innovation. They are committed to continuously providing customers with professional services of rapid research and development, stable quality and timely delivery.



FENGCHI



Our products are mainly used in five fields: agricultural machinery, garden machinery, sports machinery, motor bikes, and construction machinery. Mainly exported to the United States, Canada, Europe, Japan, Thailand and other countries. The terminal supporting customers are the top companies in the industry. Among them, agricultural machinery customers include John Deere and Kubota, garden machinery includes Husqvarna, GGP, sports machinery includes Bombardier, Polaris, motor bikes include Honda, Suzuki, and Yamaha, and construction machinery includes JCB and so on.

We are also one of the world's most complete suppliers of product specifications in the low-speed wheel field. Currently we have thousands of products of different types, appearances, specifications and sizes, with diameters from 3-26 inches and widths from 1.5-13 inches.



FENGCHI is a key industrial enterprise in Wenling city of Zhejiang province, and has been awarded many honorary titles such as Zhejiang manufacturing certification enterprise, National high-tech enterprise, Zhejiang export famous brand enterprise, Zhejiang famous trademark and so on.



FENGCHI



FENGCHI

The company has set up a professional R & D center, dedicated to providing customers with a full range of services from product design, 3D modeling, sample production, performance testing, and mold processing, and has the ability to complete products from design drawings to sample production in one week.

In order to solve the problem of multiple varieties and small batches, we have cultivated a technical team of 70 engineers, which can be matched with dedicated manufacturing processes and production equipment according to customer needs, and tens of thousands of development experiences, so that we fully have the strongest technical strength.

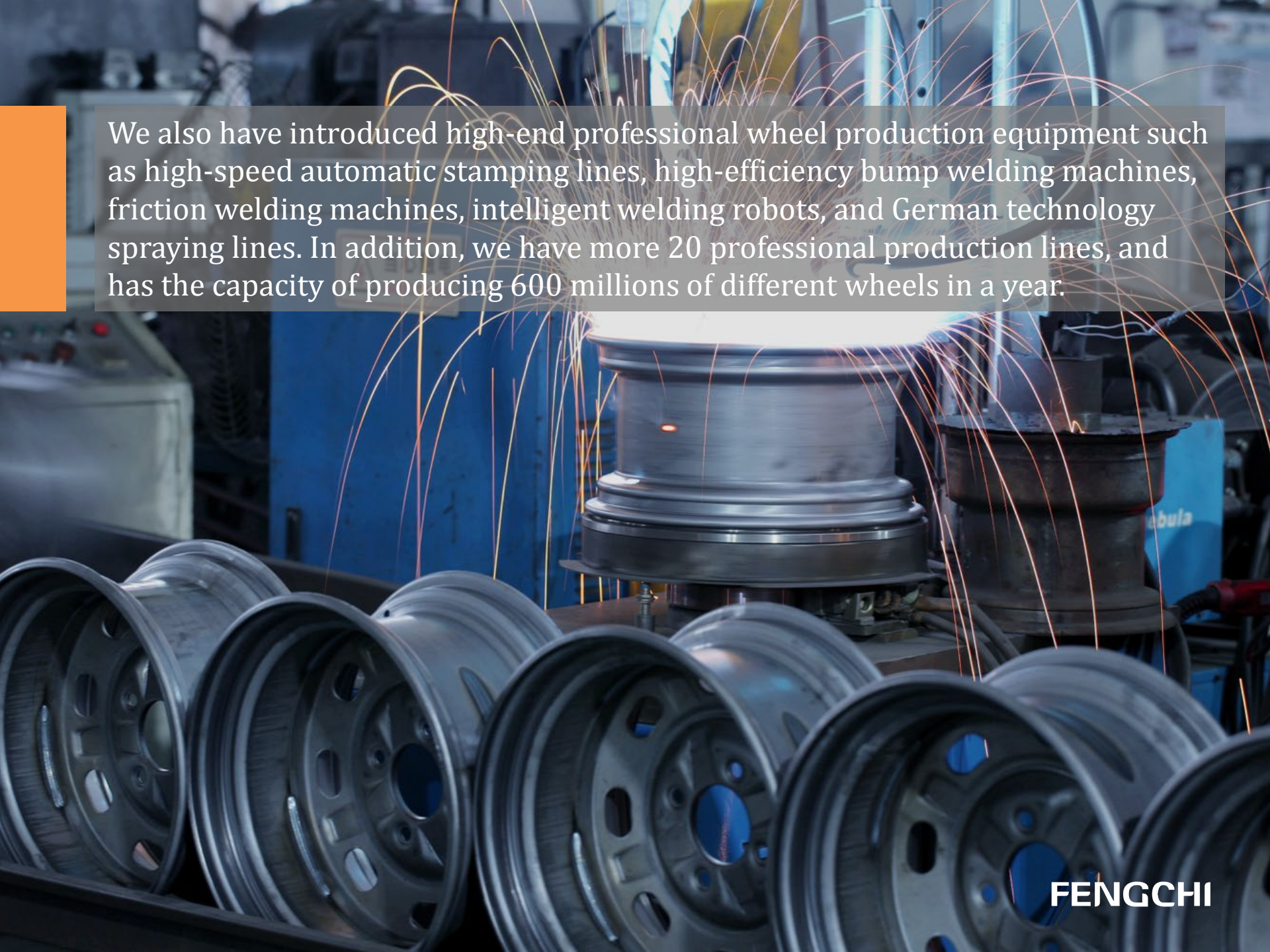


FENGCHI

A male worker in a light grey long-sleeved shirt with orange collar and cuffs, wearing a grey cap with an orange band and safety glasses, is working in a factory. He is wearing grey work gloves and is focused on a task involving a large, circular metal component on a machine. The background is filled with industrial machinery and equipment, creating a busy factory environment.

FENGCHI

Nearly half of the production machines are self-made equipment, including internal roll-forming machine, coupling synchronous rolling machine, intelligent rounding machine, double gun automatic welding machine, automatic tire loading machine, etc., which greatly improves the production efficiency and quality levels.

The image shows a manufacturing environment for wheels. In the foreground, several finished, dark-colored steel wheels are lined up on a conveyor or storage rack. In the background, a wheel is being processed by a machine, creating a large spray of bright orange sparks. The scene is dimly lit, with the primary light source being the sparks from the machinery. A semi-transparent text box is overlaid on the upper left portion of the image.

We also have introduced high-end professional wheel production equipment such as high-speed automatic stamping lines, high-efficiency bump welding machines, friction welding machines, intelligent welding robots, and German technology spraying lines. In addition, we have more 20 professional production lines, and has the capacity of producing 600 millions of different wheels in a year.

FENGCHI



FENGCHI

In addition to manufacturing, we also provide value-added services such as overseas warehousing, tire assembly, special wheels, tires and other spare parts supply, and we also manufacture automatic tire loading machine for customers. Therefore, we have the ability to provide customers with professional full-service.



We believe in the principle of quality first, and always believe that first-class quality starts with the selection of first-class materials, and always uses the highest quality plates and plastic powder to ensure that our customers' products can reach the ultimate appearance level.

We also pursue the business philosophy of the best price-performance ratio of products. By concentrating the same products of different customers, we intensify the production of multiple varieties and small batches of products, thereby reducing production costs and providing customers with the highest quality products at reasonable prices.



In 1995, we successfully developed the internal roll-forming machine. After seven generations of replacement, we completely simplified the original processes and reduced 3 steps into 1 step to form a rim with more efficiency and higher quality.





In 1998, we became acquainted with Honda. For more than 20 years of cooperation, we have developed a variety of scooter rims for them, and become the only steel wheel supplier of Honda resale in the Japanese market in mainland China.



In 2005, we successfully entered the John Deere supporting system, and in the following year we obtained a world-class supplier certificate. High-quality products and services have been highly recognized by customers.



JOHN DEERE





ALL INWARD ROLLED RIM PROFILE



ALL OUTWARD ROLLED RIM PROFILE



AT RIM PROFILE



JA RIM PROFILE



In 2008, our original "O" all-rolled rim profile greatly improved the pressure resistance of steel wheels and solved the product needs of the giant ATV company Polaris.

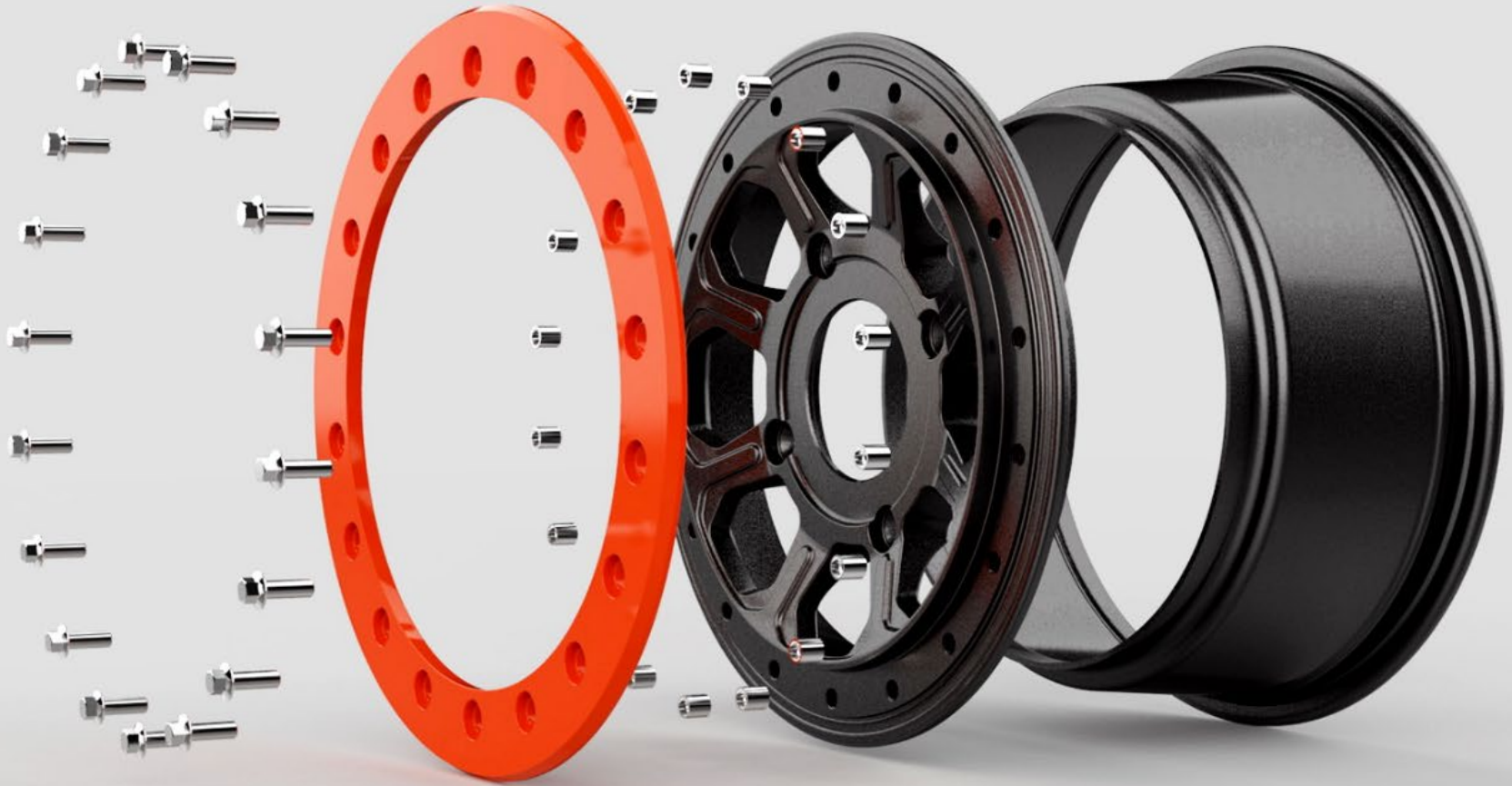
In 2013, we take the technology of aluminum and steel combination, which makes the new construction of steel rim matches aluminum center disc. It has completely overturned the current situation of expensive aluminum wheels and ugly steel wheels in the industry.

1. More fashion than steel wheel
2. Cheaper than Aluminum wheel
3. Better capacity of impact resistance
4. Better capacity of loading



In 2018, our innovative "CHAINFLLY" series of welded aluminum wheels are dedicated to addressing issues of weight and control for ATVs and off-road SUVs. At present, this product has been successfully used in Can-Am Maverick X3 series ATVs.





Different from the traditional casting processing, we use advanced aerospace-grade FSW welding technology to combine aluminum plate rolling rims and casting spokes, thereby greatly reducing wheel weight, while improving impact resistance and reducing energy consumption.



ZHEJIANG FENGCHI MECHANICAL CO., LTD
(Headquarter)

Dongnan Industrial Park, Songmen Town,
Wenling City, Zhejiang, China. 317511

Tel: 0576-86623280

Fax: 0576-86665454

Mail: fc@fengchi.com

TAIZHOU FENGCHI WHEEL CO., LTD
(Branch)

Jiulong Industrial Park, West Street,
Wenling City, Zhejiang, China. 317500

Tel : 0576-86961398

Fax : 0576-86971951

Mail : wzq@fcmech.com



Finally, thank you for
your patience. Please
believe that we have the
ability and strength to
use our sincerity and
sincerity to create the
most satisfactory
product for you.

 **FENGCHI**

本宣传画册2020年01月修订发布
版权专属浙江风驰机械有限公司

